



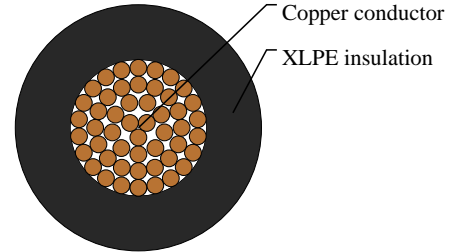
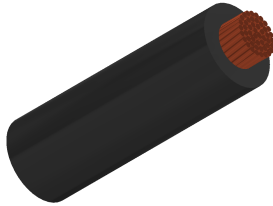
Caledonian

Automotive Cables

www.caledonian-cables.com

marketing@caledonian-cables.com

AEXHF 1C1.25



APPLICATIONS

This XLPE insulated single-core cable is used in low voltage circuits in automobiles(vehicles and motorcycles), Superior heat resistance with irradiated PE superior more than thermal resistance AEX type.

STANDARDS

ES SPEC

CABLE CONSTRUCTION

Conductor: Tin coated annealed stranded copper.

Insulation: Cross-linked Polyethylene (XLPE)

Standard Compliance: ES SPEC

PHYSICAL AND THERMAL PROPERTIES

Operating temperature: -40 °C to +150°C

Rated voltage up to 60V

DIMENSION AND PARAMETERS

No. of Cores × Cross-sectional Area	No. and Dia. of Wires	Diameter of Conductor (max.)	Nominal Insulation Thickness	Overall Diameter (min.)	Overall Diameter (max.)	Approx. Weight	Electrical Resistance at 20°C (max.)
No. × mm ²	no./mm	mm	mm	mm	mm	kg/km	MΩ/m
1x1.25	50/0.18	1.5	0.6	2.7	2.8	17.5	14.6